

OFFICE OF THE INSPECTOR OF PRISONS

A Framework for the Inspection of Prisons in Ireland

Presentation - 15 September 2020



OIFIG AN CHIGIRE PRÍOSÚN
OFFICE OF THE INSPECTOR OF PRISONS

Our Mission

Supporting excellence in both delivery and outcomes in Ireland's prisons through an independent programme of inspections and investigations.



OIFIG AN CHIGIRE PRÍOSÚN
OFFICE OF THE INSPECTOR OF PRISONS

Our Values

- Independent and Impartial



OIFIG AN CHIGIRE PRÍOSÚN
OFFICE OF THE INSPECTOR OF PRISONS

Our Values

- Independent and Impartial
- Human Rights Focused



Our Values

- Independent and Impartial
- Human Rights Focused
- Transparent and Collaborative



Our Values

- Independent and Impartial
- Human Rights Focused
- Transparent and Collaborative
- Capable and Systematic



Why have Oversight of Prisons?

- International Obligations and Standards



Why have Oversight of Prisons?

- International Obligations and Standards
- National Legislative Requirements



Why have Oversight of Prisons?

- International Obligations and Standards
- National Legislative Requirements
- National Policy



Inspection Framework Structure

FOCUS AREAS



OIFIG AN CHIGIRE PRÍOSÚN
OFFICE OF THE INSPECTOR OF PRISONS

Inspection Framework Structure

Safety &
Security

FOCUS AREAS



OIFIG AN CHIGIRE PRÍOSÚN
OFFICE OF THE INSPECTOR OF PRISONS

Inspection Framework Structure



Inspection Framework Structure



Inspection Framework Structure



Inspection Framework Structure



Inspection Framework Structure



Inspection Framework Structure



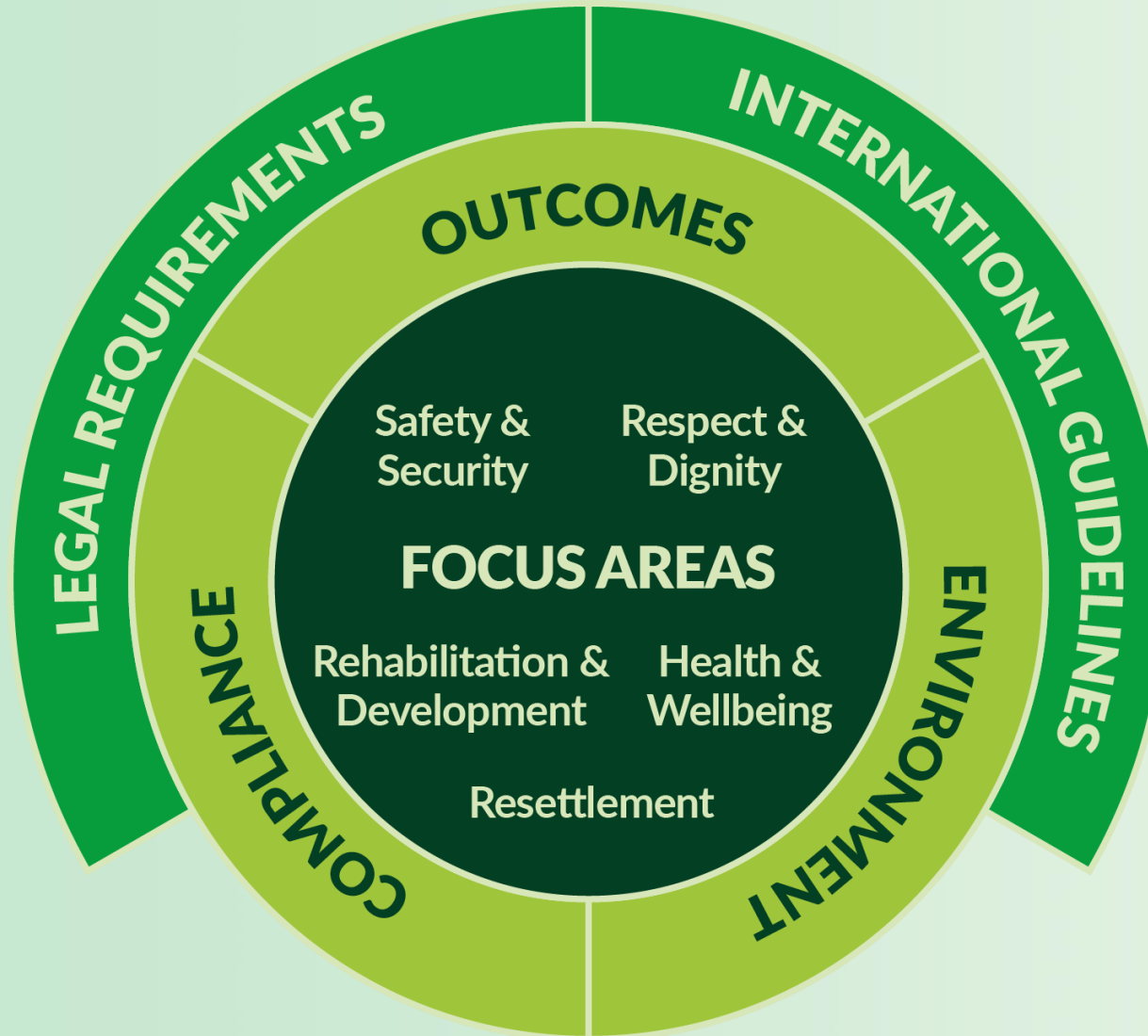
Inspection Framework Structure



Inspection Framework Structure



Inspection Framework Structure



Inspection Framework Structure



Assessment Ratings used by the Inspectorate reflect both:

- **Performance** – current performance levels in respect of each of the Focus Areas.
- **Risk** – current and future likelihood and scale of adverse impact of performance in respect of each of the Focus Areas if appropriate mitigating action is not taken



Assessment Ratings

Rating	High-level Definition
Very Good	<p>Comprehensive coverage of and adherence to relevant legislation, human rights standards, policies/procedures, good practice; and</p> <p>There is demonstrated evidence that outcomes are being achieved in the areas under this rubric; and</p> <p>The environment of the prison is very good.</p> <p>Achievement of a rating of 'very good' is an indicator of 'excellence'.</p>



Overall Rating

	Outcomes	Compliance	Environment
Security & Safety			
Respect & Dignity			
Health & Wellbeing			
Rehabilitation & Development			
Resettlement			



Immediate Action Notice (IAN)

- Concerns around current performance

or

- Risk of adverse impact on future performance

An Immediate Action Notice may be raised.



Risk Matrix

	Impact			
Probability	Negligible	Material	Significant	Critical
Almost Certain	High	High	Very High	Very High
Likely	Medium	High	High	Very High
Possible	Low	Medium	High	Very High
Unlikely	Low	Low	Medium	High
Very Unlikely	Low	Low	Medium	High



Types of Inspection

General Inspection

Inspection of all aspects of the management and operation of a specific prison.

Typically, these General Inspections will be unannounced.



Types of Inspection

Thematic Inspection

Inspection of a specific operational area across the whole prison estate, for example:

- Solitary confinement
- Prisoner safety
- Prisoner restraint
- Staff wellbeing

Typically, these Thematic Inspections will be unannounced.



Types of Inspection

Functional Inspection

Inspection of a specific functional area across the whole prison estate identified during a general or thematic inspection and which impacts upon the operation of the prison and/or prisoner rehabilitation, for example:

- Human Resources
- Finance
- Governance
- Education
- Healthcare

Typically, these Functional Inspections will be unannounced.



Types of Inspection

Follow-up Inspection

Follow-up Inspection (after a General, Thematic or Functional Inspection) to assess progress against the Action Plan, which the IPS will have produced to address the recommendations in the original Inspection report. The Follow-up Inspection may focus on one or more areas of specific concern.

Typically, these Follow-up Inspections will be announced.

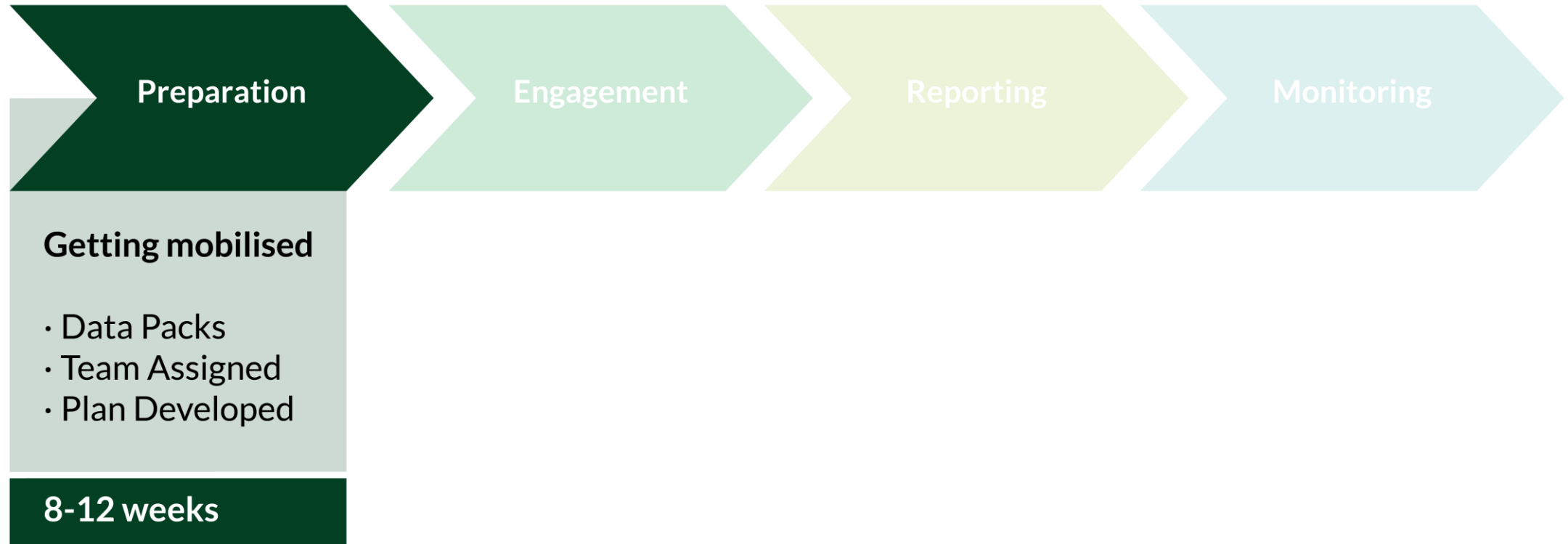
Follow-up inspections are optional and the Inspectorate may decide to rely on self-assessment by prison management if the Action Plan is particularly low-risk.



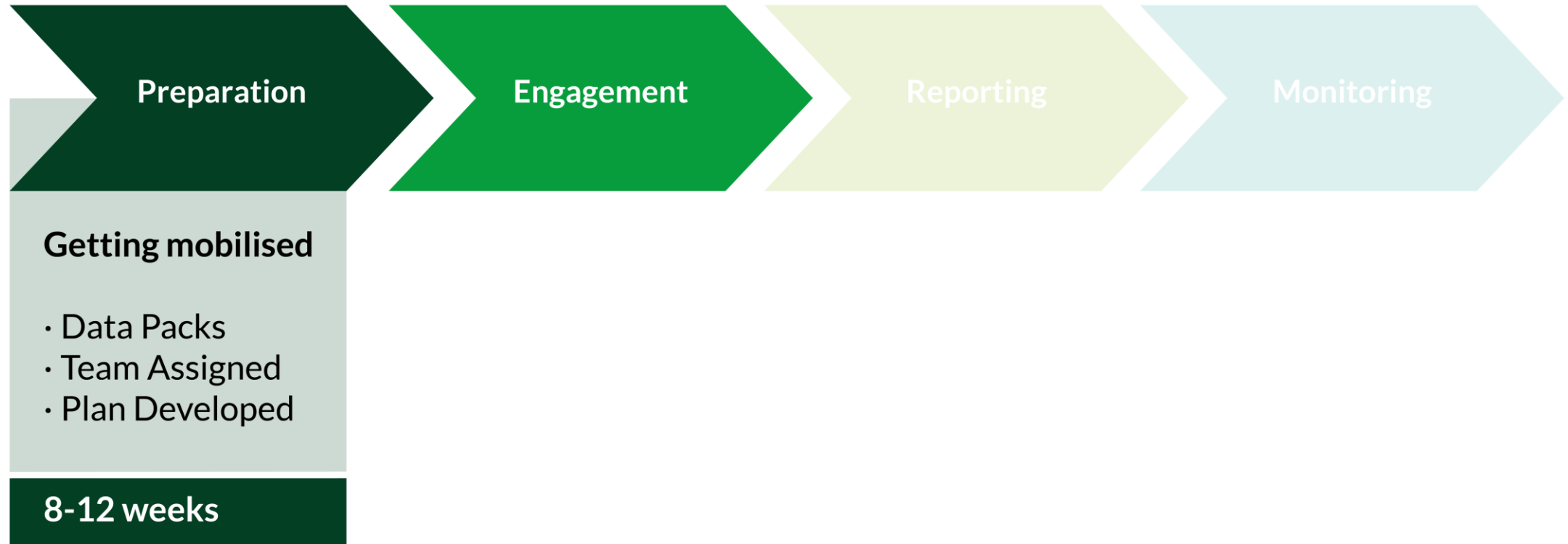
Common Inspection Format



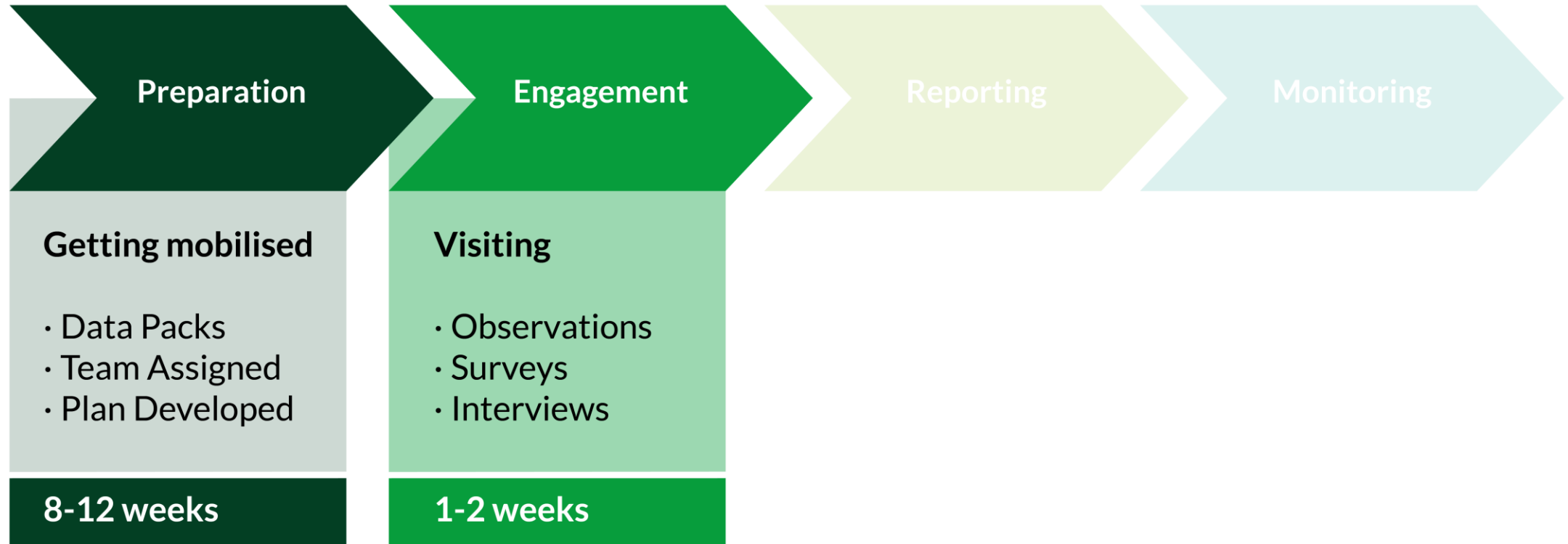
Common Inspection Format



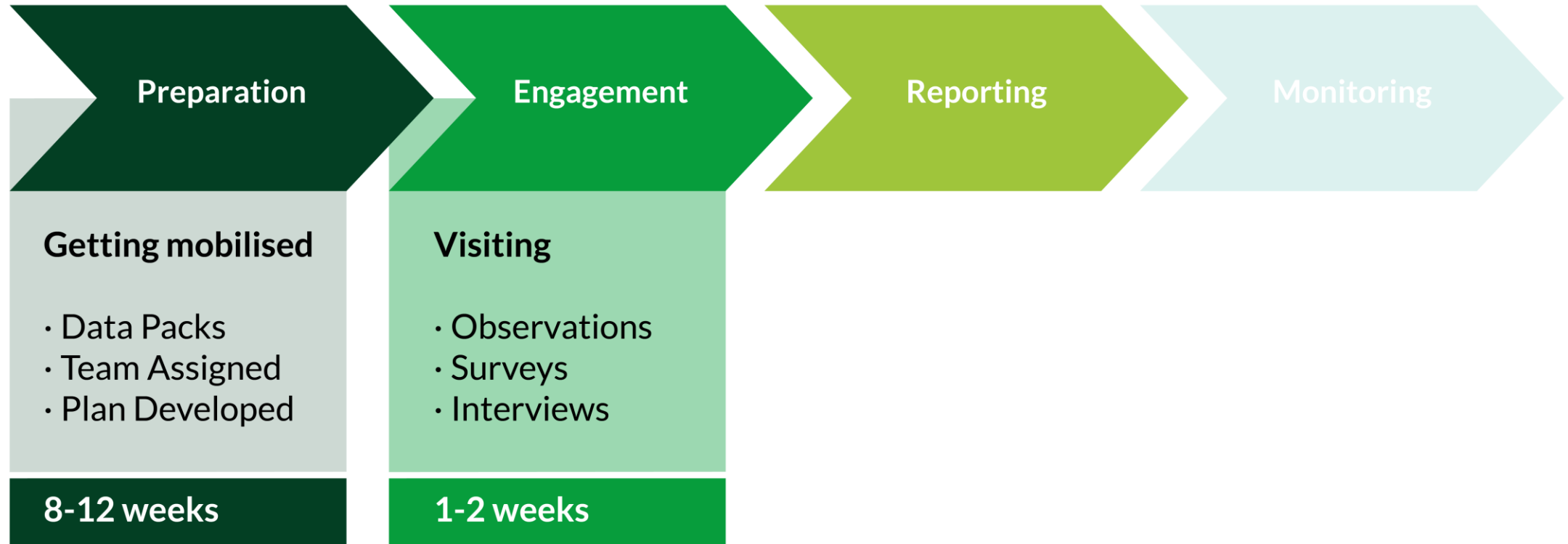
Common Inspection Format



Common Inspection Format



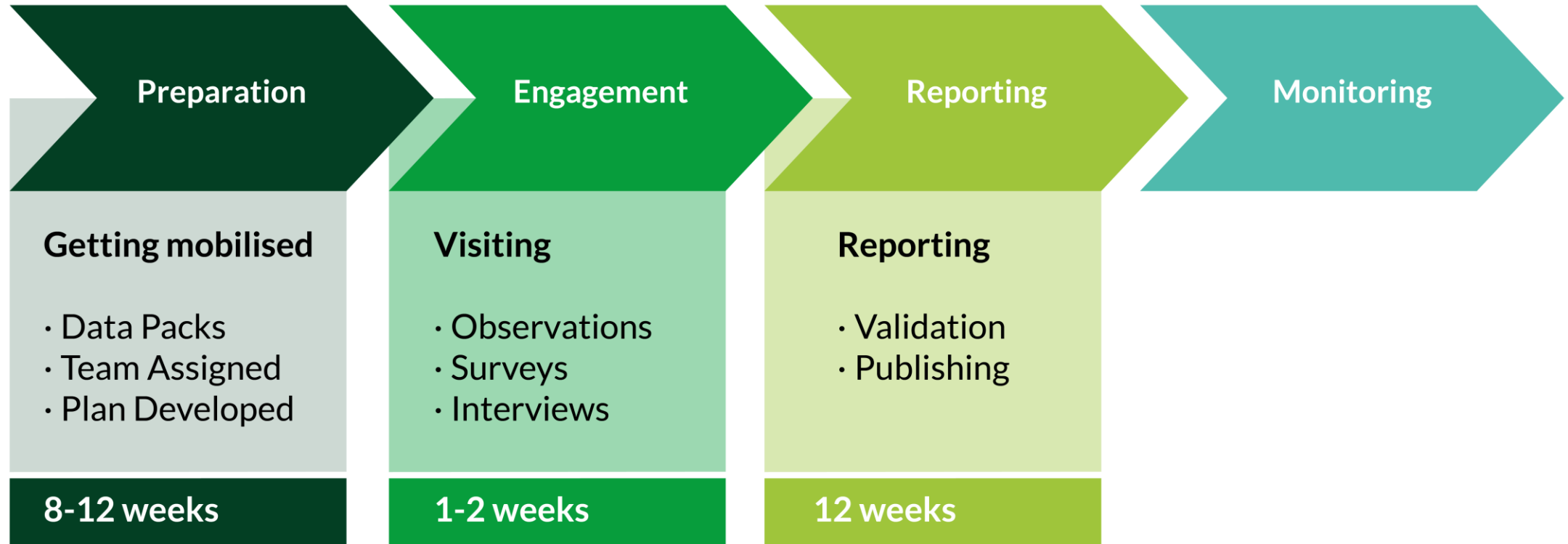
Common Inspection Format



Common Inspection Format



Common Inspection Format



Common Inspection Format



Provision of Data to the Inspectorate

Ongoing and regular data requests

These data requests will be higher-level and made to the IPS on a quarterly basis

Data requests made during the course of inspections

These data requests will be more detailed and will be made to prison management during the course of an inspection



Working Document Templates

Form Templates

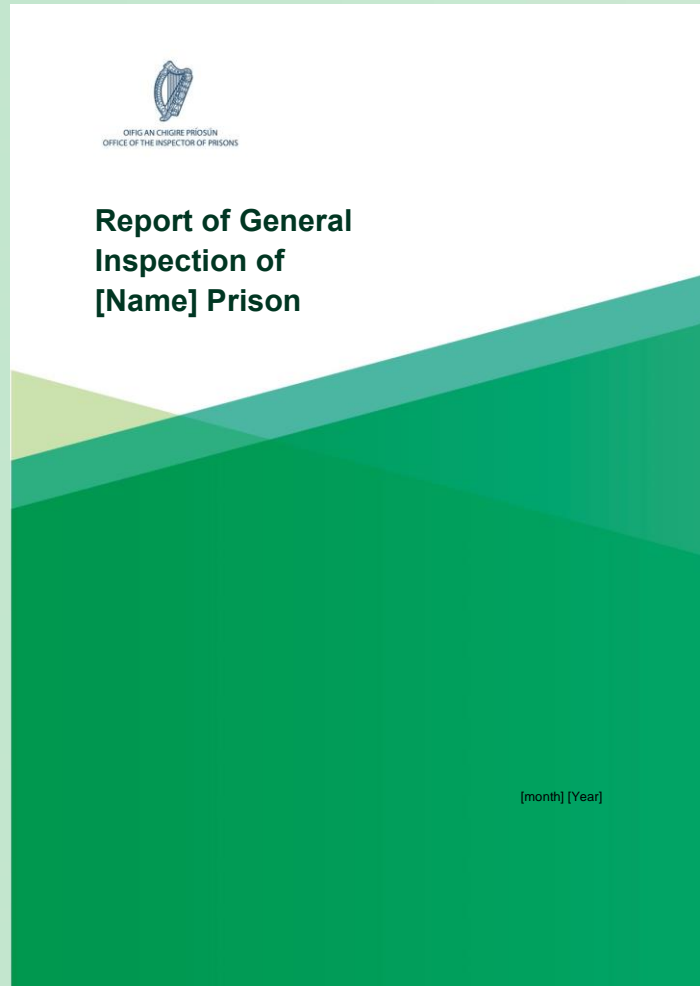
- Briefing Note
- Discussion Guide
- Immediate Action Notification
- Data Request

Report Templates

- Report on General Inspection
- Report on Functional Inspection
- Report on Thematic Inspection
- Report on Follow-up Inspection



Report Templates – General Inspection



Contents	
1	Introduction
2	Background
2.1	National Legislative Requirements
2.2	National Policy
2.3	International Obligations and Standards
2.4	OPCAT
2.5	Approach for Inspections
3	Key Facts
4	Summary of Findings
5	Inspection Findings
5.1	Security and Safety
5.2	Respect and Dignity
5.3	Health and Wellbeing
5.4	Rehabilitation and Development
5.5	Resettlement
6	Summary of Main Concerns and Recommendations
7	Summary of Good Practice
Appendix A: Detailed Assessment Ratings	
Appendix B: Prison Population Profile	
Appendix C: Summary of Surveys	
Appendix D: Summary of Interviews	



Thank You

Your Feedback regarding the Inspection Framework is welcome

Please use the following email address:

info@oip.ie



OIFIG AN CHIGIRE PRÍOSÚN
OFFICE OF THE INSPECTOR OF PRISONS